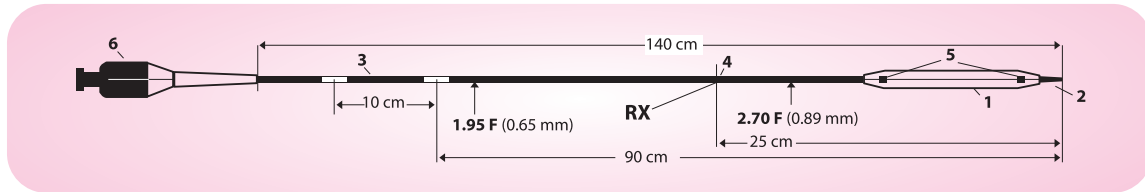


PacliTrust[®]

Advanced Paclitaxel-Coated Balloon Catheter Technology



ORDERING INFORMATION CORONARY APPLICATION (0.014" PTCA GUIDE WIRE) Rx

	10	15	20	25	30	35	40
1.50	PT15010	PT15015	PT15020	PT15025	PT15030	PT15035	PT15040
2.00	PT20010	PT20015	PT20020	PT20025	PT20030	PT20035	PT20040
2.25	PT22510	PT22515	PT22520	PT22525	PT22530	PT22535	PT22540
2.50	PT25010	PT25015	PT25020	PT25025	PT25030	PT25035	PT25040
2.75	PT27510	PT27515	PT27520	PT27525	PT27530	PT27535	PT27540
3.00	PT30010	PT30015	PT30020	PT30025	PT30030	PT30035	PT30040
3.50	PT35010	PT35015	PT35020	PT35025	PT35030	PT35035	PT35040
4.00	PT40010	PT40015	PT40020	PT40025	PT40030	PT40035	PT40040

Additional sizes available upon request

For more information or to place an order:



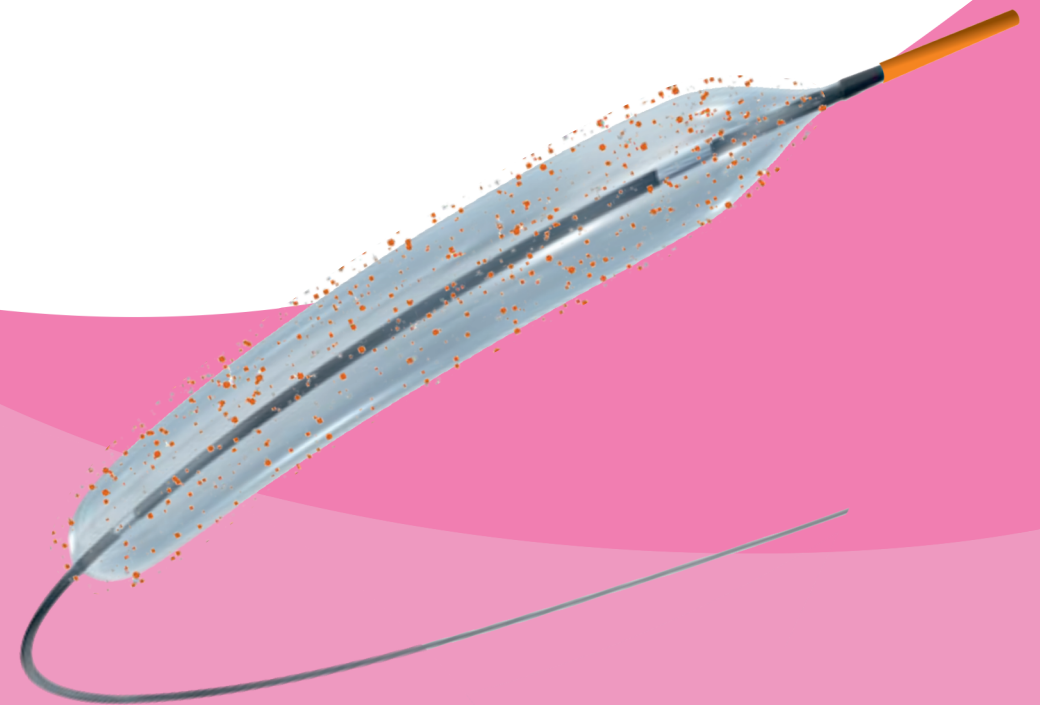
Factory: Plot No. 5305, 4th Phase, G.I.D.C.,
Vapi - 396195 Gujarat, India
Customer Service :
Email : dcbs@veritasbio.com
Website : www.veritasbio.com



PACLITRUST[®] is a registered trademark. All rights reserved.*
*This brochure is intended for healthcare professionals only

PacliTrust[®]

Advanced Paclitaxel-Coated Balloon Catheter Technology



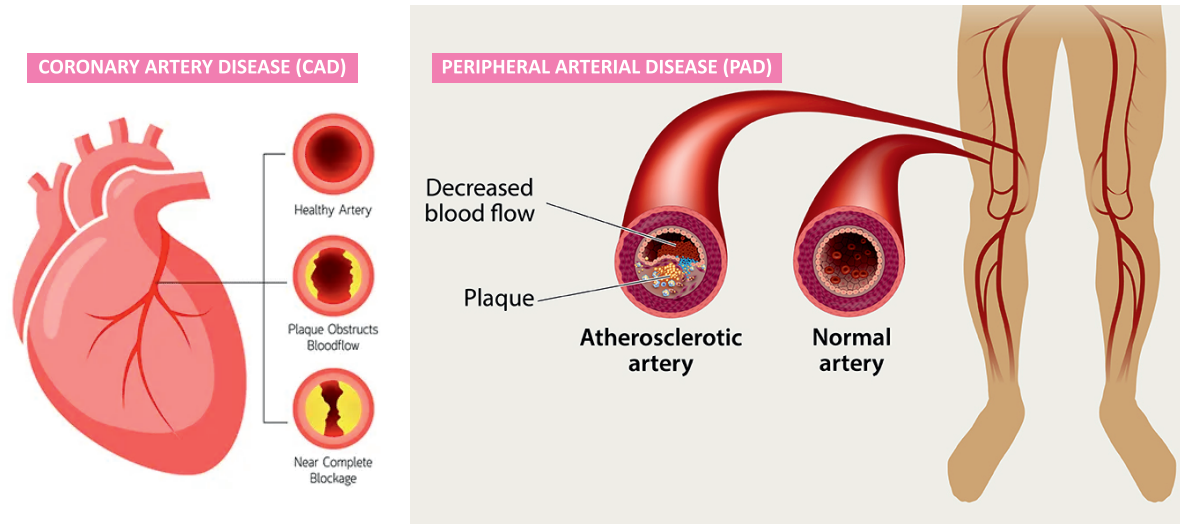
| www.veritasbio.com

PacliTrust[®]



Advanced Paclitaxel-Coated Balloon Catheter Technology

INNOVATIVE TREATMENT FOR VASCULAR DISEASE



PacliTrust[®] represents the latest advancement in drug-coated balloon (DCB) technology, designed to deliver optimal therapeutic outcomes for patients with Coronary Arterial Disease (CAD) and Peripheral Arterial Disease (PAD). By combining precise drug delivery with minimally invasive balloon angioplasty, PacliTrust helps restore blood flow while inhibiting restenosis.

CLINICAL ADVANTAGES

- **Sustained Drug Delivery:** Optimized paclitaxel coating ensures controlled release for maximum efficacy
- **LMSC (Linear Motion Spray Coating) Technology:** to ensure equal distribution of the drug throughout the balloon
- **Reduced Restenosis Rates:** Clinically proven to significantly decrease vessel re-narrowing compared to standard balloon procedures.
- **Durable Results:** Long-term patency with reduced need for reintervention
- **Vessel-Friendly Design:** Minimizes vascular trauma during deployment and inflation
- **No Permanent Implant:** Leaves nothing behind after treatment, preserving future treatment options

PACLITRUST[®] FEATURES

Optimized Drug Coating

- Precise 3.0 $\mu\text{g}/\text{mm}^2$ paclitaxel dose density
- Homogeneous coating distribution
- Enhanced drug transfer to vessel wall
- Proprietary excipient matrix for controlled release

Advanced Balloon Technology

- Low-profile crossing capability
- High-pressure rating for optimal lesion dilation
- Controlled inflation/deflation characteristics
- Superior trackability and pushability

Comprehensive Size Range

- Diameters: 1.5 mm to 10.0 mm
- Lengths: 10 mm to 120 mm
- Compatible with 0.014" and 0.018" guidewires

PACLITRUST[®] INDICATIONS

- Percutaneous transluminal angioplasty (PTA) of de novo or restenotic lesions in:
 - Coronary artery
 - Superficial femoral artery
 - Popliteal artery
 - Infrapopliteal arteries
- Treatment of in-stent restenosis
- Revascularization of below-the-knee vessels

SAFETY INFORMATION

Paclitaxel-coated balloons should be used according to their approved indications and with consideration of the appropriate benefit-risk profile for each patient. Healthcare providers should discuss the benefits and risks of all available PAD treatments with their patients.

Important Safety Information:

- Not for use in patients with known hypersensitivity to paclitaxel
- Contraindicated in pregnant or breastfeeding women
- Careful consideration required for patients unable to receive recommended antiplatelet therapy
- Review full prescribing information before use